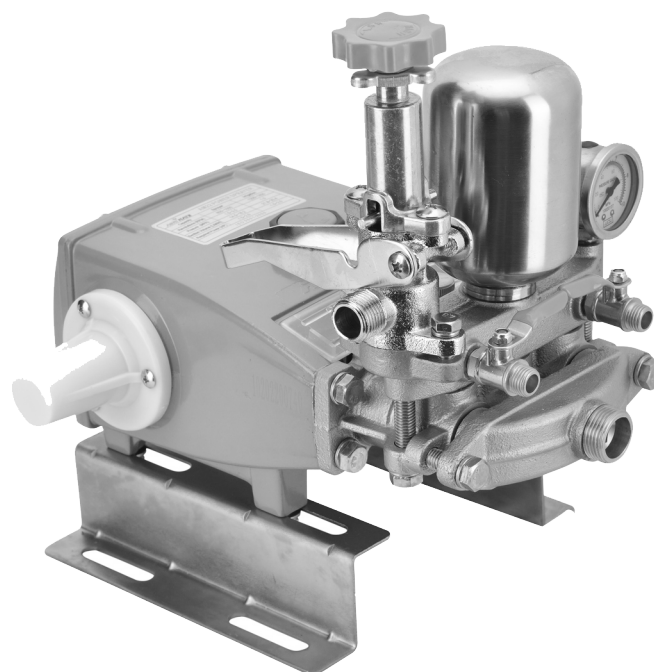


HTP HIGH PRESSURE SPRAYER

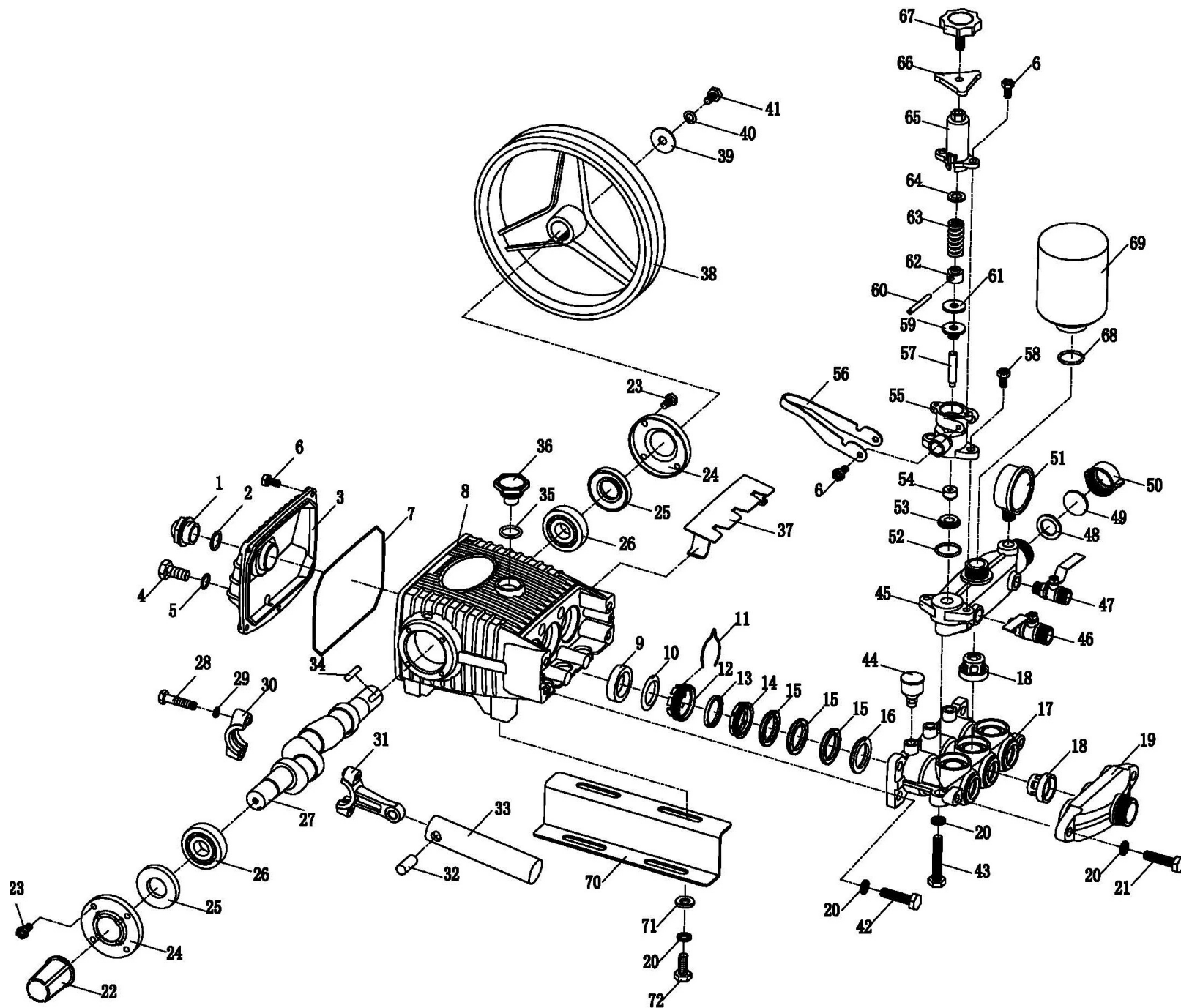
AM-22FSK/22K ☐ AM-22-PRO ☐



INTRODUCTION

1. Check every fasteners and make sure that the sprayer and the motor are installed firmly on the frame.
2. Set the two pullies in a straight-line, and the belt in an appropriate tightness
3. Every joint of the hoses must be tightened to prevent from leaking
4. Before starting the motor, shut off the (43) cock(valve) loose the (56) pressure adjusting screw and pull the (59) pressure adjuster to the top
5. Start the motor to power the sprayer, keep a proper revolution, press the (59) pressure adjuster to the bottom. Keep the pressure around 21-35Kgs by adjusting the (56) pressure adjusting screw.
6. Open the (43) cock valve to start spraying
7. After the spraying is over. Pull the (59) pressure adjuster to the top and operate the sprayer with fresh water to clean out the remaining chemicals.
8. Replace the engine oil after the sprayer has been used for the first 10 hours, 50 hours, and then every 100 hours.
9. Drain away the dirty engine oil by screwing off the (5) drain plug

AM-22FSK/22K& SPARE PARTS DIAGRAM



SPARE PARTS LIST OF AM-22FSK/22K HTP HIGH PRESSURE SPRAYER

SL NO	PART NO	DESCRIPTION	SL NO	PART NO	DESCRIPTION
1	AM-22FSK/22K-01	Oil Gas	17	AM-22FSK/22K-17	Cylinder
2	AM-22FSK/22K-02	O-Ring	18	AM-22FSK/22K-18	Valve
3	AM-22FSK/22K-03	Crankcase Cover	19	AM-22FSK/22K-19	Suction metal
4	AM-22FSK/22K-04	Plug Drain	20	AM-22FSK/22K-20	Washer spring
5	AM-22FSK/22K-05	O-Ring	21	AM-22FSK/22K-21	Bolt
6	AM-22FSK/22K-06	Bolt	22	AM-22FSK/22K-22	Cover oil seal
7	AM-22FSK/22K-07	Crankcase Gasket	23	AM-22FSK/22K-23	Bolt
8	AM-22FSK/22K-08	Crankcase	24	AM-22FSK/22K-24	Cover oil seal
9	AM-22FSK/22K-09	Plunger oil seal	25	AM-22FSK/22K-25	Crankshaft oil seal
10	AM-22FSK/22K-10	stopping ring water	26	AM-22FSK/22K-26	Bearing
11	AM-22FSK/22K-11	Circlip	27	AM-22FSK/22K-27	Crankshaft
12	AM-22FSK/22K-12	Grand	28	AM-22FSK/22K-28	Bolt
13	AM-22FSK/22K-13	Grease seal	29	AM-22FSK/22K-29	Washer spring
14	AM-22FSK/22K-14	Grease Ring	30	AM-22FSK/22K-30	Connecting Rod
15	AM-22FSK/22K-15	V- Packing	31	AM-22FSK/22K-31	
16	AM-22FSK/22K-16	V- packing seat	32	AM-22FSK/22K-32	Pin

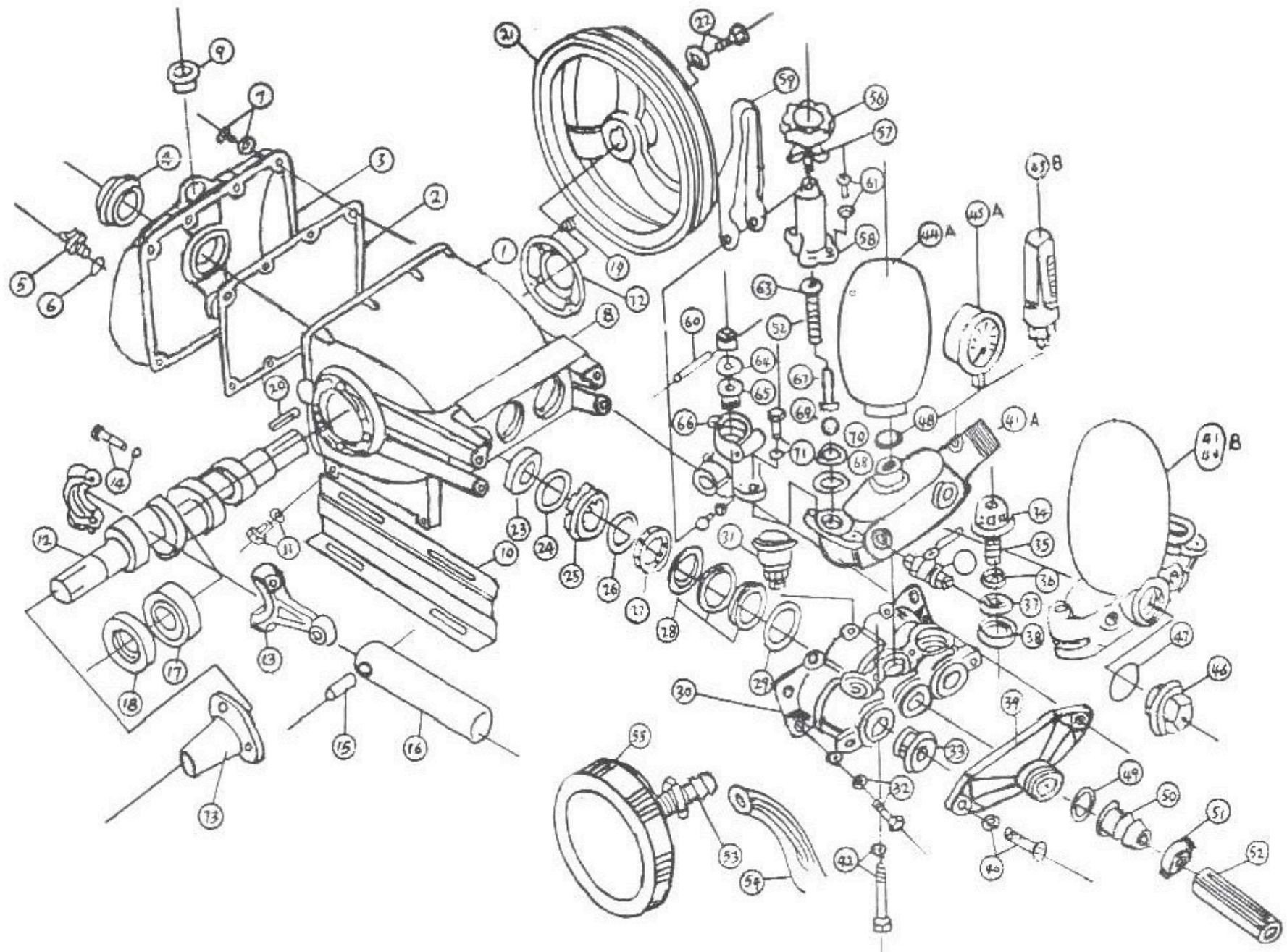
SPARE PARTS LIST OF AM-22FSK/22K HTP HIGH PRESSURE SPRAYER

SL NO	PART NO	DESCRIPTION	SL NO	PART NO	DESCRIPTION
33	AM-22FSK/22K-33	Plunger	49	AM-22FSK/22K-49	Gasket
34	AM-22FSK/22K-34	Pin	50	AM-22FSK/22K-50	Coupling
35	AM-22FSK/22K-35	O-Ring	51	AM-22FSK/22K-51	Pressure guage
36	AM-22FSK/22K-36	Plunger cover	52	AM-22FSK/22K-52	O-ring
37	AM-22FSK/22K-37	Plug	53	AM-22FSK/22K-53	Valve seat
38	AM-22FSK/22K-38	Pulley	54	AM-22FSK/22K-54	Valve plug
39	AM-22FSK/22K-39	Washer	55	AM-22FSK/22K-55	Body overflow
40	AM-22FSK/22K-40	washer spring	56	AM-22FSK/22K-56	Knob control
41	AM-22FSK/22K-41	Bolt	57	AM-22FSK/22K-57	Spindle
42	AM-22FSK/22K-42	Bolt	58	AM-22FSK/22K-58	Bolt
43	AM-22FSK/22K-43	Bolt	59	AM-22FSK/22K-59	Seat
44	AM-22FSK/22K-44	Grease Cup	60	AM-22FSK/22K-60	Pin
45	AM-22FSK/22K-45	Discharge metal	61	AM-22FSK/22K-61	Flat Gasket
46	AM-22FSK/22K-46	Cock	62	AM-22FSK/22K-62	Spring washer
47	AM-22FSK/22K-47	Cock	63	AM-22FSK/22K-63	Spring
48	AM-22FSK/22K-48	Washer	64	AM-22FSK/22K-64	Seat

SPARE PARTS LIST OF AM-22FSK/22K HTP HIGH PRESSURE SPRAYER

[illegible]

AM-22 PRO SPARE PARTS DIAGRAM



SPARE PARTS LIST OF AM-22 PRO HTP SPRAYER

SL NO	PART NO	DESCRIPTION	SL NO	PART NO	DESCRIPTION
1	AM22P-01	Crankcase	17	AM22P-17	Bearing
2	AM22P-02	Gasket Crankcase	18	AM22P-18	Oil seal Crankshaft
3	AM22P-03	Cover Crank case	19	AM22P-19	Bolt
4	AM22P-04	Oil guage	20	AM22P-20	Key
5	AM22P-05	Plug drain	21	AM22P-21	Pulley
6	AM22P-06	O-Ring	22	AM22P-22	Bolt
7	AM22P-07	Screw	23	AM22P-23	Oil seal plunger
8	AM22P-08	Plunger cover	24	AM22P-24	Stopping Ring Water
9	AM22P-09	Plug	25	AM22P-25	Grand
10	AM22P-10	Red crank case	26	AM22P-26	Crease Seal
11	AM22P-11	Bolt washer spring	27	AM22P-27	Crease Ring
12	AM22P-12	Crankshaft	28	AM22P-28	V. Packing
13	AM22P-13	Connecting rod	29	AM22P-29	V Packing Seat
14	AM22P-14	Bolt washer spring	30	AM22P-30	Cylinder
15	AM22P-15	plunger pin	31	AM22P-31	Grease Cup
16	AM22P-16	plunger	32	AM22P-32	Bolt Washer spring

SPARE PARTS LIST OF AM-22 PRO HTP SPRAYER

SL NO	PART NO	DESCRIPTION	SL NO	PART NO	DESCRIPTION
33	AM22P-33	Valve Assy	49	AM22P-49	Packing
34	AM22P-34	Valve Box	50	AM22P-50	Core Coupling
35	AM22P-35	Valve Spring	51	AM22P-51	Coupling
36	AM22P-36	Valve Flat	52	AM22P-52	P.V.C.Hose
37	AM22P-37	Valve Seat	53	AM22P-53	Core Strainer
38	AM22P-38	Valve Seal	54	AM22P-54	P.V.C.Hose
39	AM22P-39	Suction Metal	55	AM22P-55	Strainer Assy
40	AM22P-40	Bolt Washer Spring	56	AM22P-56	Screw
41	AM22P-41	Discharge Metal	57	AM22P-57	Fly Nut
42	AM22P-42	Bolt Washer spring	58	AM22P-58	Spring Box
43	AM22P-43	Cock	59	AM22P-59	Knob Control
44	AM22P-44	Air Chamber	60	AM22P-60	Pin
45	AM22P-45	Pressure Gauge	61	AM22P-61	Bolt Washer Spring
46	AM22P-46	Bolt Washer Spring	62	AM22P-62	Spring
47	AM22P-47	O-Ring	63	AM22P-63	Upper Metal
48	AM22P-48	O-Ring	64	AM22P-64	Packing

[illegible]

WARRANTY CARD

CUSTOMER COPY

DATE _____	DATE OF DELIVERY _____	DEALERS OFFICIAL SEAL	DEALERS SIGN _____
PURCHASERS NAME & ADDRESS _____ _____ _____	<div>CUSTOMER SIGN</div>	<div></div>	
PRODUCT NAME	PRODUCT SERIAL NO.	INVOICE/DN NO.	
<div></div>	<div></div>	<div></div>	
I/Will accept the terms and conditions of warranty as in the warranty card			

DEALERS COPY

DATE _____	DATE OF DELIVERY _____	DEALERS OFFICIAL SEAL	DEALERS SIGN _____
PURCHASERS NAME & ADDRESS _____ _____ _____	<div>CUSTOMER SIGN</div>	<div></div>	
PRODUCT NAME	PRODUCT SERIAL NO.	INVOICE/DN NO.	
<div></div>	<div></div>	<div></div>	
I/Will accept the terms and conditions of warranty as in the warranty card			

COMPANY COPY

DATE _____	DATE OF DELIVERY _____	DEALERS OFFICIAL SEAL	DEALERS SIGN _____
PURCHASERS NAME & ADDRESS _____ _____ _____	<div>CUSTOMER SIGN</div>	<div></div>	
PRODUCT NAME	PRODUCT SERIAL NO.	INVOICE/DN NO.	
<div></div>	<div></div>	<div></div>	
I/Will accept the terms and conditions of warranty as in the warranty card			

1. LIMITED WARRANTY PERIOD : For a period of six months from the date of Sale / delivery of the product which ever is earlier. 2. LIMITED WARRANTY OBLIGATION : Replacement of defective part(s) by authorized dealer are free of charges. If found defective by reasons of defective material / poor workmanship, parts will be replaced and there will be no value re-imbursement. 3. TERMS & CONDITIONS : a. Claims under warranty will be accepted on submission of Warranty Card duly filled and stamped by authorized dealer together with the original purchase document. : b. Shipping / transportation / Incidental charges incurred in replacing defective parts under warranty shall be borne by the purchaser

WARRANTY null & void if
(i) Lack of maintenance, (ii) Incorrect use of the machine or tampering, (iii) Use of non-genuine spare parts, (iv) Usage of acids, solvents, or any flammable materials, (v) Non-usage of filter water / clear water / soft water & using water above 40°C temperature, (vi) While using the pressure washers to draw water which is contaminated with dust & solvents (eg. paint thinners, gasoline, oil, etc.), (vii) Repair done by unauthorized service people, (viii) Those parts subject to wear & tear due to normal operations and plastic parts, rubber items etc, (ix) Loose connections, faulty electrical fixtures & fluctuations in power supply.
4. Should any failure occur during or after the warranty period, customer does not have the right to interrupt payment / price discount.
5. Incidental or consequential damages like inconvenience commercial loss, loss of tie, mental agony etc.
6. Loss of any nature due to operation or non-operation is not covered under warranty.
7. All free service are at Dealer's service point only.
8. Warranty ceases if service is not done periodically.
9. The attached card should be completed and returned to Ratnagiri Impex Pvt. Ltd. for registration immediately after sale / delivery.
10. The warranty is void unless you register the warranty card with Ratnagiri Impex Pvt. Ltd.
11. The decision of Ratnagiri Impex Pvt. Ltd., in settling the warranty is final in all respects.
12. All disputes are subject to Bangalore Courts Jurisdiction

1. LIMITED WARRANTY PERIOD : For a period of six months from the date of Sale / delivery of the product which ever is earlier. 2. LIMITED WARRANTY OBLIGATION : Replacement of defective part(s) by authorized dealer are free of charges. If found defective by reasons of defective material / poor workmanship, parts will be replaced and there will be no value re-imbursement. 3. TERMS & CONDITIONS : a. Claims under warranty will be accepted on submission of Warranty Card duly filled and stamped by authorized dealer together with the original purchase document. : b. Shipping / transportation / Incidental charges incurred in replacing defective parts under warranty shall be borne by the purchaser.
WARRANTY null & void if
(i) Lack of maintenance, (ii) Incorrect use of the machine or tampering, (iii) Use of non-genuine spare parts, (iv) Usage of acids, solvents, or any flammable materials, (v) Non-usage of filter water / clear water / soft water & using water above 40°C temperature, (vi) While using the pressure washers to draw water which is contaminated with dust & solvents (eg. paint thinners, gasoline, oil, etc.), (vii) Repair done by unauthorized service people, (viii) Those parts subject to wear & tear due to normal operations and plastic parts, rubber items etc, (ix) Loose connections, faulty electrical fixtures & fluctuations in power supply.
4. Should any failure occur during or after the warranty period, customer does not have the right to interrupt payment / price discount.
5. Incidental or consequential damages like inconvenience commercial loss, loss of tie, mental agony etc.
6. Loss of any nature due to operation or non-operation is not covered under warranty.
7. All free service are at Dealer's service point only.
8. Warranty ceases if service is not done periodically.
9. The attached card should be completed and returned to Ratnagiri Impex Pvt. Ltd. for registration immediately after sale / delivery.
10. The warranty is void unless you register the warranty card with Ratnagiri Impex Pvt. Ltd.
11. The decision of Ratnagiri Impex Pvt. Ltd., in settling the warranty is final in all respects.
12. All disputes are subject to Bangalore Courts Jurisdiction

1. LIMITED WARRANTY PERIOD : For a period of six months from the date of Sale / delivery of the product which ever is earlier. 2. LIMITED WARRANTY OBLIGATION : Replacement of defective part(s) by authorized dealer are free of charges. If found defective by reasons of defective material / poor workmanship, parts will be replaced and there will be no value re-imbursement. 3. TERMS & CONDITIONS : a. Claims under warranty will be accepted on submission of Warranty Card duly filled and stamped by authorized dealer together with the original purchase document. : b. Shipping / transportation / Incidental charges incurred in replacing defective parts under warranty shall be borne by the purchaser.
WARRANTY null & void if
(i) Lack of maintenance, (ii) Incorrect use of the machine or tampering, (iii) Use of non-genuine spare parts, (iv) Usage of acids, solvents, or any flammable materials, (v) Non-usage of filter water / clear water / soft water & using water above 40°C temperature, (vi) While using the pressure washers to draw water which is contaminated with dust & solvents (eg. paint thinners, gasoline, oil, etc.), (vii) Repair done by unauthorized service people, (viii) Those parts subject to wear & tear due to normal operations and plastic parts, rubber items etc, (ix) Loose connections, faulty electrical fixtures & fluctuations in power supply.
4. Should any failure occur during or after the warranty period, customer does not have the right to interrupt payment / price discount.
5. Incidental or consequential damages like inconvenience commercial loss, loss of tie, mental agony etc.
6. Loss of any nature due to operation or non-operation is not covered under warranty.
7. All free service are at Dealer's service point only.
8. Warranty ceases if service is not done periodically.
9. The attached card should be completed and returned to Ratnagiri Impex Pvt. Ltd. for registration immediately after sale / delivery.
10. The warranty is void unless you register the warranty card with Ratnagiri Impex Pvt. Ltd.
11. The decision of Ratnagiri Impex Pvt. Ltd., in settling the warranty is final in all respects.
12. All disputes are subject to Bangalore Courts Jurisdiction

FREE SERVICE COUPON (30DAYS/30HRS. WHICHEVER IS EARLIER)

MODEL		SERIAL NUMBER	
PDI DATE	SERVICE NO.	PURCHASE BILL NO.	DATE
DEALERS OFFICE SEAL	OPERATIONS		
	<div> 1. Check and test the fuel mixture 3. Check , clean and adjust the spark plug 5. Check and sparken the cutting tools 7. Start and check the noise, vibration, loosen etc.. </div> <div> 2. check and clean the air filter 4. Check and adjust the carburetor tuning 6. Product familiarisation on usage 8. Routine maintenance and shortage. </div>		

FREE SERVICE COUPON (30DAYS/30HRS. WHICHEVER IS EARLIER)

MODEL		SERIAL NUMBER	
PDI DATE	SERVICE NO.	PURCHASE BILL NO.	DATE
DEALERS OFFICE SEAL	OPERATIONS		
	<div> 1. Check and test the fuel mixture 3. Check , clean and adjust the spark plug 5. Check and sparken the cutting tools 7. Start and check the noise, vibration, loosen etc.. </div> <div> 2. check and clean the air filter 4. Check and adjust the carburetor tuning 6. Product familiarisation on usage 8. Routine maintenance and shortage. </div>		

FREE SERVICE COUPON (30DAYS/30HRS. WHICHEVER IS EARLIER)

MODEL		SERIAL NUMBER	
PDI DATE	SERVICE NO.	PURCHASE BILL NO.	DATE
DEALERS OFFICE SEAL	OPERATIONS		
	<div> 1. Check and test the fuel mixture 3. Check , clean and adjust the spark plug 5. Check and sparken the cutting tools 7. Start and check the noise, vibration, loosen etc.. </div> <div> 2. check and clean the air filter 4. Check and adjust the carburetor tuning 6. Product familiarisation on usage 8. Routine maintenance and shortage. </div>		

DOS & DONTs

1. Always read the instruction manual supplied along with the equipments and understand the correct installation and operating procedures before attempting to use the equipments.
2. It is important to use the personal protection equipments such as head helmet with visor, ear defenders, goggles, safety gloves, cut resistant shoes, trousers and jackets while operating potentially dangerous machines
3. Avoid untrained persons using the equipments. Children must not be allowed to handle these equipments
4. Always use genuine spares and accessories in repairs and usage to derive maximum life of the equipments.
5. Always keep the equipments in good working condition to minimize loss of output as well as to reduce the pollution and save the environment
6. Do not use the machine within range of persons unless they wear protective clothing
7. Do not operate the machine when fatigued or under the influence of alcohol or drugs
8. When the machine is running, please maintain a constant water supply. Without water circulation will damage the sealing rings of the machine.
9. For more query kindly contact for our Service Center/Dealer/ franchise

Agrimate Army For Pest Control

ANY WHERE - ANY TIME - ANY CROP



Marketed by:

**ratnagiri
impex**

BRINGING YOU THE FUTURE... NOW

RATNAGIRI IMPEX PVT., LTD.,

Annapurna House, #1 / 1G, 7th Cross, New
Guddadahalli

Mysore Road, Bangalore - 560 026

Missed Call : 7393 938 938

Email: ask@agrimart.in